



Iowa Ag News – Cattle on Feed

Iowa Field Office · 210 Walnut Street Ste 833 · Des Moines IA 50309 · (515) 284-4340 · (800) 772-0825
fax (515) 284-4342 or (800) 719-1794 · www.nass.usda.gov/ia

Cooperating with the Iowa Department of Agriculture and Land Stewardship

June 21, 2013

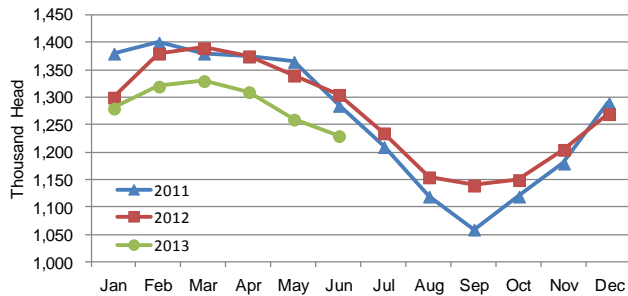
Media Contact: Greg Thessen

Cattle and calves on feed for slaughter market in Iowa for all feedlots totaled 1,230,000 on June 1, 2013 according to the USDA, National Agricultural Statistics Service, Iowa Field Office. The inventory is down 2 percent from May 1, 2013 and down 6 percent from June 1, 2012. Feedlots with a capacity greater than 1,000 head had 610,000 head on feed, down 2 percent from last month and down 5 percent from last year. Feedlots with a capacity less than 1,000 head had 620,000 head on feed, down 3 percent from last month and down 7 percent from last year.

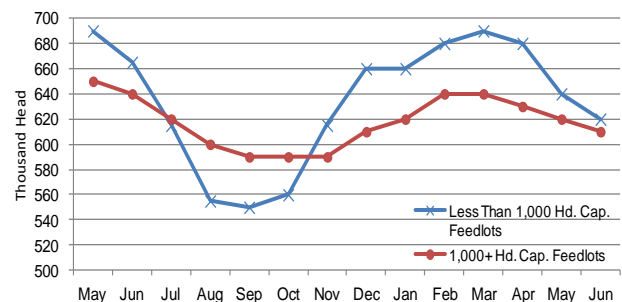
Placements during May totaled 104,000 head, a decrease of 26 percent from last month and down 17 percent from last year. Feedlots with a capacity greater than 1,000 head placed 65,000 head, down 27 percent from last month, but up 10 percent from last year. Feedlots with a capacity less than 1,000 head placed 39,000 head. This is down 24 percent from last month and down 42 percent from last year.

Marketings for May were 129,000 head, down 30 percent from last month and down 16 percent from last year. Feedlots with a capacity greater than 1,000 head marketed 72,000 head, down 26 percent from last month but up 13 percent from last year. Feedlots with a capacity less than 1,000 head marketed 57,000 head, down 35 percent from last month and down 37 percent from last year. Other disappearance totaled 5,000 head.

Cattle on Feed, Inventory on all Feedlots, Iowa: 2011-2013



Cattle on Feed, Inventory by Feedlot Capacity, Iowa: Current Month & Past 12 Months



All Cattle on Feed, Iowa

| Item | Lots 1,000+ Head (1,000 Head) | Lots Less than 1,000 Head (1,000 Head) | All Lots (1,000 Head) |
|------------------------------------|----------------------------------|--|--------------------------|
| Cattle on Feed, May 1, 2013 | 620 | 640 | 1,260 |
| May Placements | 65 | 39 | 104 |
| May Marketings | 72 | 57 | 129 |
| May Other Disappearance | 3 | 2 | 5 |
| Cattle on Feed, June 1, 2013 | 610 | 620 | 1,230 |

Cattle on Feed: Number on Feed, Placements, Marketings, and Other Disappearance by Month, 1,000+ Capacity Feedlots

[Cattle and calves on feed are animals for slaughter market being fed a ration of grain or other concentrates and are expected to produce a carcass that will grade select or better.]

| State | Cattle on Feed June 1 | | | Placements during May | | | Marketings during May | | | May Disappearance other than Slaughter ¹ | | |
|-------------------|-----------------------|--------------|-----------------|-----------------------|--------------|-----------------|-----------------------|--------------|-----------------|---|--------------|-----------------|
| | 2012 | 2013 | '13 as % of '12 | 2012 | 2013 | '13 as % of '12 | 2012 | 2013 | '13 as % of '12 | 2012 | 2013 | '13 as % of '12 |
| | (1,000 Head) | (1,000 Head) | (Percent) | (1,000 Head) | (1,000 Head) | (Percent) | (1,000 Head) | (1,000 Head) | (Percent) | (1,000 Head) | (1,000 Head) | (Percent) |
| Arizona | 282 | 272 | 96 | 36 | 25 | 69 | 29 | 27 | 93 | 1 | 1 | 100 |
| California | 490 | 510 | 104 | 70 | 77 | 110 | 53 | 54 | 102 | 2 | 3 | 150 |
| Colorado | 1,020 | 960 | 94 | 180 | 170 | 94 | 170 | 150 | 88 | 20 | 20 | 100 |
| Idaho | 210 | 205 | 98 | 29 | 41 | 141 | 32 | 45 | 141 | 2 | 1 | 50 |
| Iowa | 640 | 610 | 95 | 59 | 65 | 110 | 64 | 72 | 113 | 5 | 3 | 60 |
| Kansas | 2,090 | 2,060 | 99 | 445 | 430 | 97 | 415 | 410 | 99 | 20 | 20 | 100 |
| Nebraska | 2,360 | 2,320 | 98 | 460 | 460 | 100 | 540 | 510 | 94 | 20 | 20 | 100 |
| Oklahoma | 320 | 310 | 97 | 81 | 78 | 96 | 54 | 61 | 113 | 2 | 2 | 100 |
| South Dakota .. | 230 | 215 | 93 | 35 | 39 | 111 | 45 | 45 | 100 | 5 | 4 | 80 |
| Texas | 2,770 | 2,630 | 95 | 580 | 570 | 98 | 500 | 465 | 93 | 20 | 15 | 75 |
| Washington | 220 | 214 | 97 | 43 | 40 | 93 | 46 | 45 | 98 | 1 | 1 | 100 |
| Other States | 445 | 430 | 97 | 66 | 54 | 82 | 69 | 64 | 93 | 2 | 10 | 500 |
| United States .. | 11,077 | 10,736 | 97 | 2,084 | 2,049 | 98 | 2,017 | 1,948 | 97 | 100 | 100 | 100 |

(D) Withheld to avoid disclosing data for individual operations.

¹ Includes death loss, movement from feedlots to pasture, and shipments to other feedlots for further feeding.

United States Cattle on Feed

Cattle and calves on feed for slaughter market in the United States for feedlots with capacity of 1,000 or more head totaled 10.7 million head on June 1, 2013. The inventory was 3 percent below June 1, 2012.

Placements in feedlots during May totaled 2.05 million, 2 percent below 2012.

Net placements were 1.95 million head. During May, placements of cattle and calves weighing less than 600 pounds were 390,000, 600-699 pounds were 304,000, 700-799 pounds were 555,000, and 800 pounds and greater were 800,000.

Marketings of fed cattle during May totaled 1.95 million, 3 percent below 2012. Marketings are the second lowest since the series began in 1996 for the month of May.

Other disappearance totaled 100,000 during May, unchanged from 2012.

Cattle on Feed Inventory on 1,000+ Capacity Feedlots – United States

